

合作 双赢
Cooperation win-win



江苏奥普威特重工有限公司
JIANGSU AUPWIT INDUSTRIAL CO., LTD.

地址: 江阴市徐霞客镇峭霞迎路32号 邮编(P.C): 214424
Add: No.32 Xiaying Road Qiaoxi Xuxiake Town Jiangyin City Jiangsu China
电话(Tel): +86-510-86961162 传真(Fax): +86-510-86961108
网址(Http): www.aupwit.com
E-mail: aaron@aupjx.com Skype: aaron13921237861
Whatapp: +86-13921237861



打包机、剪切机、液压机专业制造商
Baler machine, shearing machine, hydraulic machine's professional manufacturer

AUPWIT

江苏奥普威特重工有限公司
JIANGSU AUPWIT INDUSTRIAL CO., LTD.

2019Version



企业文化 » culture



供应商

Supplier



荣誉证书

Certificate honor



EPM-Z大型全自动打包机 EPM-Z Large- sized Full Automatic Balers

机器特点

- 光电开关自动检测物料是否加满，实现全自动功能。
- 合理的双剪式刀片设计，提高了切纸效率，延长刀片的使用寿命。
- 独特的防滑落设计，避免梯形包的出现，使包块更美观。
- 主油缸采用炮耳支架及球端面设计，可消除作用在主轴上的扭矩，显著延长油封寿命。
- 装配独特的捆线装置，从而减低故障率并便于清洁保养及维修。
- 采用差动技术，使打包速度更快，从而提高工作效率，节省功率。
- 机器出口处四方向浮动缩口，从而自动分配四面的压力，可广泛用于各种不同物质的压缩。
- 可自由设定出包长度，准确记录打包数值，方便操作者使用。
- 故障自动诊断，自动显示，提高检测效率。
- 国际标准的电路布置、图示化操作指示以及详细的部件标示，使操作者简单易懂并提高维护效率。
- 压车经过龙门铣床加工，确保运动时的精度。
- 本机采用原装台湾进口液压系统，使机器更安全耐用。
- 无需特殊的场地基础设施，使安装简单容易。
- 机身采用“HARDOX”耐磨板。

Features

- Photoelectric switch activates baler when charge box is full.
- Unique double-cutting design of cutters improves the cutting efficiency and lengthens the lifespan of the cutters.
- Particular anti-slide design of the machine makes nicer bales.
- Unique trunnion-mounted frame and ball-end joint design for the main cylinder avoid the torque on the rod, which lengthens the lifespan of the seals.
- Equipped with rapid automatic tying system, easy for cleaning and maintaining.
- Use differential technique for the hydraulic system, makes shorter cycle time so that improve the working efficiency and save electricity.
- Automatic tension system ensures "brick-like" bales on all loose materials.
- Adjustable bales length and bales quantity accumulating function make the operation of the machine more convenient.
- Automatically detect and show the errors of the machine which improve the machine inspection efficiency.
- International standard electric circuit layout, graphic operation instruction and detailed parts marks make the operation been more easily understanding and improves the maintenance efficiency.
- The press heads are specially processed by planomiller, ensures the precise running of the ram.
- Use high quality hydraulic system from Taiwan, ensures the stable running of the machine.
- The heavy duty machine body makes sure only flat ground is required by the installation.
- "HARDOX" in my body.

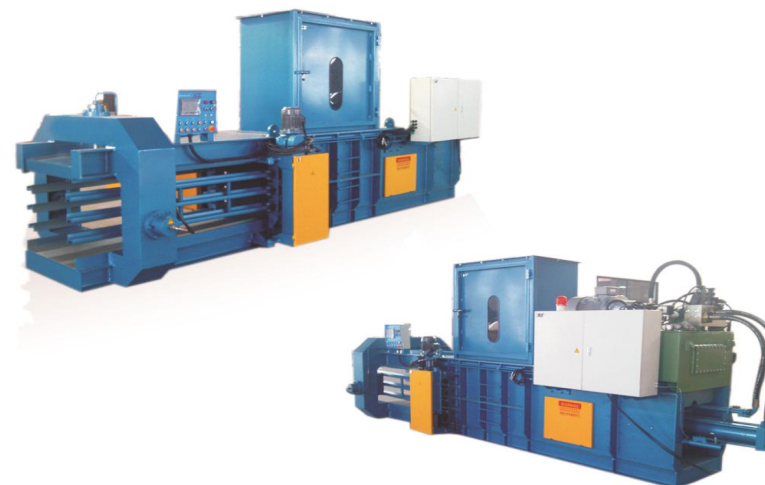
EPM-Z大型全自动打包机 EPM-Z Large- sized Full Automatic Balers

机器特点

专门用于废纸、废旧纸板，纸箱厂边角料，废书本，废杂志，塑料膜，秸秆等松散物的回收压缩打包。

Features

Specialized in recycling and compressing the loose materials like wastepaper, cardboards, carton trims, waste books, magazines, plastic film, natural fiber and straw etc.



参数 Specifications

型号 Model	EPM-Z-100-15	EPM-Z-100-16	EPM-Z-100-17	EPM-Z-100-18
压力 Pressure	100tons	100tons	100tons	100tons
主电机功率 Main Motor Power	45kw	45kw	45kw	45kw
冷却方式 Cooling System	air cooler/water cooler	air cooler/water cooler	air cooler/water cooler	air cooler/water cooler
循环时间(空载) Cycle Time (unload)	14s	16s	14s	16s
油箱尺寸 Oil Reservoir	1600L	1600L	1600L	1600L
捆包道数 Number of Belting	4lines	4lines	5lines	5lines
捆包铁丝规格 Wire Size	∅3.0-3.2	∅3.0-3.2	∅3.0-3.2	∅3.0-3.2
加料口尺寸(L*W) Feed Opening Size (L*W)	1600*1050mm	1800*1050mm	1600*1050mm	1800*1050mm
包块尺寸(L*W*H,L可调) Bale size(L*W*H,L can be adjustable)	L*1100*800mm	L*1100*800mm	L*1100*1100mm	L*1100*1100mm
打包密度(OCC) Bale Density(OCC)	400-500kgs/m ³	400-500kgs/m ³	400-500kgs/m ³	400-500kgs/m ³
产量(30-60kgs/m ³) Throughput(30-60kgs/m ³)	5-9tons/h	5-10tons/h	6-11tons/h	6-12tons/h
机器重量 Machine Weight	15tons	16tons	17tons	18tons
机器外观尺寸 Machine Overall Dimension	8500*4000*4200mm	9100*4000*4200mm	8700*4000*4200mm	9300*4000*4200mm
捆扎方式 Tying	水平捆扎或者垂直捆扎 Horizontal Tying or Vertical Tying			
送料装置 Feeding Device(optional)	Conveyor	Conveyor	Conveyor	Conveyor

传输机 Conveyor				
宽度 Feeding Width	1600mm	1800mm	1600mm	1800mm
速度 Speed	12m/min	12m/min	12m/min	12m/min
功率 Power	7.5kw	7.5kw	7.5kw	7.5kw
重量 Weight	6tons	7tons	6tons	7tons
外观尺寸 Overall Dimension	11000*2100*5100mm	11000*2300*5100mm	11000*2100*5100mm	11000*2300*5100mm

打散器(适用于回收报纸) Used for newspaper				
马达Motor	11kw	11kw	11kw	11kw

参数 Specifications

型号 Model	EPM-Z-125-19	EPM-Z-125-20	EPM-Z-125-21	EPM-Z-125-22
压力 Pressure	125tons	125tons	125tons	125tons
主电机功率 Main Motor Power	55kw	55kw	55kw	55kw
冷却方式 Cooling System	air cooler/water cooler	air cooler/water cooler	air cooler/water cooler	air cooler/water cooler
循环时间(空载) Cycle Time (unload)	15s	17s	15s	17s
油箱尺寸 Oil Reservoir	1900L	1900L	1900L	1900L
捆包道数 Number of Belting	5lines	5lines	5lines	5lines
捆包铁丝规格 Wire Size	∅3.0-3.4	∅3.0-3.4	∅3.0-3.4	∅3.0-3.4
加料口尺寸(L*W) Feed Opening Size (L*W)	1600*1050mm	1800*1050mm	1600*1050mm	1800*1050mm
包块尺寸(L*W*H,L可调) Bale size(L*W*H,L can be adjustable)	L*1100*1100mm	L*1100*1100mm	L*1100*1250mm	L*1100*1250mm
打包密度(OCC) Bale Density(OCC)	450-550kgs/m ³	450-550kgs/m ³	450-550kgs/m ³	450-550kgs/m ³
产量(30-60kgs/m ³) Throughput(30-60kgs/m ³)	7-13tons/h	7-14tons/h	8-15tons/h	8-16tons/h
机器重量 Machine Weight	19tons	20tons	21tons	22tons
机器外观尺寸 Machine Overall Dimension	9000*4100*4200mm	9600*4100*4200mm	9000*4100*4200mm	9600*4100*4200mm
捆扎方式 Tying	水平捆扎或者垂直捆扎 Horizontal Tying or Vertical Tying			
送料装置 Feeding Device(optional)	Conveyor	Conveyor	Conveyor	Conveyor

传输机 Conveyor				
宽度 Feeding Width	1600mm	1800mm	1600mm	1800mm
速度 Speed	12m/min	12m/min	12m/min	12m/min
功率 Power	7.5kw	7.5kw	7.5kw	7.5kw
重量 Weight	6tons	7tons	6tons	7tons
外观尺寸 Overall Dimension	12000*2100*5300mm	12000*2300*5300mm	12000*2100*5300mm	12000*2300*5300mm

打散器(适用于回收报纸) Used for newspaper				
马达Motor	11kw	11kw	11kw	11kw

EPM-Z大型全自动打包机 EPM-Z Large-sized Full Automatic Balers



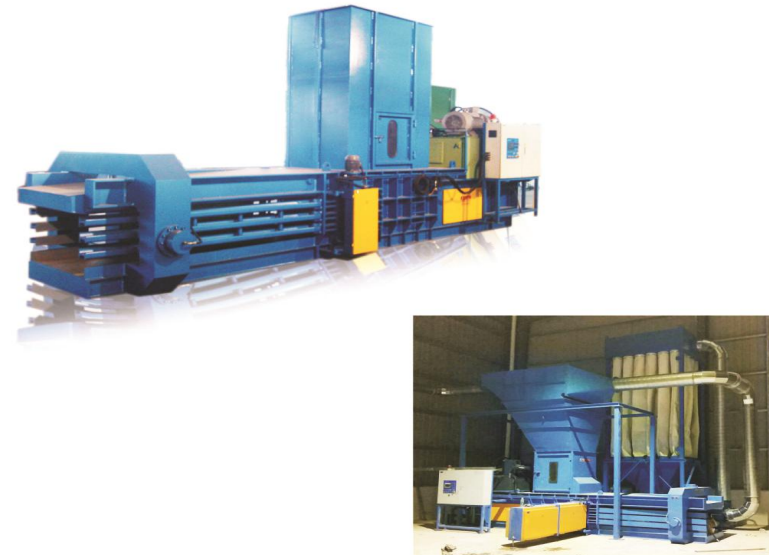
EPM-Z中型全自动打包机 EPM-Z Medium-sized Full Automatic Balers

机器应用

专门用于废纸、废旧纸板，纸箱厂边角料，塑料膜，秸秆等松散物的压缩打包。

Usage

Widely used for compressing waste cardboards, cartons, paper, plastic film, straw etc.



参数 Specifications

型号 Model	EPM-Z-60	EPM-Z-80-16	EPM-Z-80-28
压力 Pressure	60tons	80tons	80tons
主电机功率 Main Motor Power	22kw	37.5kw	37.5kw
冷却方式 Cooling System	air cooler/water cooler	air cooler/water cooler	air cooler/water cooler
循环时间(空载) Cycle Time (unload)	24s	16s	28s
油箱尺寸 Oil Reservoir	1000L	1100L	1100L
捆包道数 Number of Belting	4lines	4lines	4lines
捆包铁丝规格 Wire Size	Ø2.7-3.2	Ø2.7-3.2	Ø2.7-3.2
加料口尺寸(L*W) Feed Opening Size (L*W)	1600*1050mm	1600*1050mm	2400*1050mm
包块尺寸(L*W*H,L可调) Bale size(L*W*H,L can be adjustable)	L*1100*750mm	L*1100*750mm	L*1100*750mm
打包密度(OCC) Bale Density(OCC)	400-500kgs/m ³	420-500kgs/m ³	420-500kgs/m ³
产量(30-60kgs/m ³) Throughput(30-60kgs/m ³)	3-7tons/h	4-8tons/h	5-10tons/h
机器重量 Machine Weight	13tons	14tons	16tons
机器外观尺寸 Machine Overall Dimension	7950*3950*3500mm	8100*3900*3500mm	9500*3900*3500mm
捆扎方式 Tying	水平捆扎或者垂直捆扎 Horizontal Tying or Vertical Tying		
送料装置 Feeding Device(optional)	Conveyor	Conveyor	Conveyor
传输机 Conveyor			
宽度 Feeding Width	1600mm	1600mm	1600mm
速度 Speed	12m/min	12m/min	12m/min
功率 Power	4/5.5kw	4/5.5kw	7.5kw
重量 Weight	5tons	5tons	6tons
外观尺寸 Overall Dimension	9000*2100*4500mm	9000*2100*4500mm	9000*2500*4500mm

EPM-Z中型全自动打包机 EPM-Z Medium-sized Full Automatic Balers



EPM-S小型全自动打包机 EPM-S Small sized Full Automatic Balers

机器应用

专门用于废纸、废旧纸板，纸箱厂边角料等松散物的压缩打包。

Usage

Specially used for recycling waste paper, cartons/ cardboards trims/scraps etc. Which are popular in packaging/corrugation industrial, paper/ printing plants etc.



参数 Specifications

型号 Model	EPM-S-20	EPM-S-40-17	EPM-S-40-20	EPM-S-60
压力 Pressure	20tons	40tons	40tons	60tons
主电机功率 Main Motor Power	11kw	15kw	15kw	18.5kw
冷却方式 Cooling System	air cooler/water cooler	air cooler/water cooler	air cooler/water cooler	air cooler/water cooler
循环时间 (空载) Cycle Time (unload)	14s	17s 24s	20s	16s
油箱尺寸 Oil Reservoir	280L	540L	540L	600L
捆包道数 Number of Belting	3lines	3lines/4lines for both models	4lines	4lines
捆包铁丝规格 Wire Size	∅2.4-3.2	∅2.4-3.2	∅2.4-3.2	∅2.4-3.2
加料口尺寸(L*W) Feed Opening Size (L*W)	650* 480mm	1200* 720mm 1600* 720mm	1200* 690mm	1200* 720mm
包块尺寸(L*W*H,L可调) Bale size(L*W*H,L can be adjustable)	L*500*500mm	L*750*750mm	L*720*800mm	L*750*850mm
打包密度(OCC) Bale Density(OCC)	350-450kgs/m ³	350-450kgs/m ³	350-450kgs/m ³	380-480kgs/m ³
产量 (30-60kgs/m ³) Throughput(30-60kgs/m ³)	1-1.5tons/h	1.5-3tons/h 2-3.5tons/h	1.5-3tons/h	2.5-5tons/h
机器重量 Machine Weight	3tons	7tons 8tons	7tons	8tons
机器外观尺寸 Machine Overall Dimension	3600*2500*1650mm	5950*3200*2500mm 7000*3200*2500mm	5950*3200*2500mm	6100*3250*2500mm
送料装置 Feeding Device(optional)	Cyclone/conveyor	Cyclone/conveyor	Cyclone/conveyor	Cyclone/conveyor
分离器Cyclone				
处理风量 Air Volume	9000-15000m ³ /h	10000-20000m ³ /h	15000-30000m ³ /h	20000-35000m ³ /h

EPM-BK大中型闭口卧式打包机 EPM-BK Large sized & Medium sized Semi-Automatic Balers With Closed End

机器应用

专门用于塑料薄膜，塑料瓶，塑料筐，废弃电脑壳，废纸，废旧纸板，纸箱，海绵等松散物的压缩打包。

Usage

Specialized in recycling and compressing the loose materials like plastic film, PET bottles, plastic pallets, waste computershell, waste paper, cartons, cardboards trims/scraps, foam etc.



机器特点

- 开口式设计，使出包方便快捷，提高工作效率。
- 闭口式设计，密度可以更高。
- 可配吸风送料或者输送机送料。
- 结构简单，操作方便。

Features

- Open end design for conveniently ejecting bales out.
- Closed end design makes sure high bale density.
- Feeding device can be suction system or conveyor.
- Simple design, easy to operate.

参数 Specifications

机器类型 Machine type	卧式半自动闭口 Semi-Automatic Baler with closed end		卧式半自动开口 Semi-Automatic baler (other models with different specification can be customized)	
型号 Model	EPM-BK-30	EPM-BK-40	EPM-BK-40-20	EPM-BK-100
压力 Pressure	30tons	40tons	40tons	100tons
主机功率 Main Motor Power	11kw	11kw	11kw	55kw
冷却方式 Cooling System	N/A	air cooler/water cooler	N/A	air cooler/water cooler
循环时间(空载) Cycle Time (unload)	27s	19s	20s	23s
油箱尺寸 Oil Reservoir	240L	240L	240L	1800L
捆包道数 Number of Belting	3lines	4lines	4lines	5lines
捆包铁丝规格 Wire Size	∅2.4-2.7	∅2.4-2.7	∅2.4-2.7	∅3.0-3.2
加料口尺寸(L*W) Feed Opening Size (L*W)	700*690mm	1000*700mm	1000*690mm	2080*1076mm
压缩腔尺寸(L*W*H) Chamber size (L*W*H)	1700*690*690mm	2200*700*780mm	1200*720*800mm	2400*1076*1250mm
包块尺寸(L*W*H, L可调) Bale Size (L*W*H, L can be adjustable)	900*700*700mm	1000*720*800mm	L*720*800mm	L*1100*1250mm
打包密度(OCC) Bale Density(OCC)	400-500kgs/m ³	400-500kgs/m ³	350-450kgs/m ³	400-500kgs/m ³
产量(30-60kgs/m ³) Throughput(30-60kgs/m ³)	0.5-1tons/h	0.5-1tons/h	0.5-1tons/h	5-8tons/h
机器重量 Machine Weight	4tons	4.5tons	5tons	16.5tons
机器外观尺寸 Machine Overall Dimension	4200*1100*1900mm	5500*1100*2000mm	4800*1500*2000mm	9100*2500*3500mm
送料装置 Feeding Device	Cyclone/belt conveyor	Cyclone/belt conveyor	Cyclone/belt conveyor	Iron conveyor

机器特点

- 闭口式结构，使得包打的更紧。
- 高强度出包门，自动开关门，液压锁门，使操作更便捷。
- 合理的双剪式刀片设计，提高了切纸效率，延长刀片的使用寿命。
- 独特的防滑落设计，避免梯形包的出现，使包块更美观。
- 主油缸采用炮耳支架及球端面设计，可消除作用在主轴上的扭矩，显著延长油封寿命。
- 压车经过龙门铣床加工，确保运动时的精度。
- 本机采用原装台湾进口液压阀，使机器更安全耐用。
- 无需特殊的场地基础设施，使安装简单容易。
- 机身采用“HARDOX”耐磨板。

Features

- Heavy duty close-gate design for more tighter bales.
- Hydraulic locked gate ensures more convenient operation.
- Unique double-cutting design of cutters improves the cutting efficiency and lengthens the lifespan of the cutters.
- Particular anti-slide design of the machine makes nicer bales.
- Unique trunnion-mounted frame and ball-end joint design for the main cylinder avoid the torque on the rod, which lengthens the lifespan of the seals.
- The press heads are specially processed by planomiller, ensures the precise running of the ram.
- Use high quality hydraulic valves from Taiwan, ensures the stable running of the machine.
- The heavy duty machine body makes sure only flat ground is required by the installation.
- "HARDOX" in my body.

参数

Specifications

卧式半自动闭口液压打包机 Semi-Auto Baler With Closed End					
型号 Model	EPM-BK-600WB10080	EPM-BK-1000WB11085 EPM-BK-1000WB110110	EPM-BK-125	EPM-BK-160	EPM-BK-200
压力 Pressure	60tons	100tons	125tons	160tons	200tons
主电机功率 Main Motor Power	15kw	30kw	30kw	37kw	45kw
冷却方式 Cooling System	air cooler/water cooler	air cooler/water cooler	water cooler	water cooler	water cooler
油箱尺寸 Oil Reservoir	380L	1460L	1460L	1460L	1460L
捆包道数 Number of Belting	4lines	4lines/5lines	5lines	7lines	7lines
加料口尺寸(L*W) Feed Opening Size (L*W)	1200*980mm	1400*1050mm 2000*1050mm	2200*1100mm	2200*1100mm	2200*1100mm
压缩腔尺寸(L*W*H) Chamber size (L*W*H)	2400*980*780mm	3000*1050*830mm 3800*1050*1050mm	4000*1100*1250mm	4200*1100*1250mm	4200*1100*1250mm
包块尺寸(L*W*H可调) Bale Size(L*W*H, can be adjustable)	1000*1000*800mm	1300*1100*850mm 1600*1100*1100mm	(200-1700)*1100*1250mm	(200-1700)*1100*1250mm	(200-1700)*1100*1250mm
打包密度(OCC) Bale Density(OCC)	450-550kgs/m³	500-600kgs/m³	520-620kgs/m³	550-650kgs/m³	580-680kgs/m³
产量 (30-60kgs/m³) Throughput(30-60kgs/m³)	1-2tons/h	1.5-3tons/h 2-6tons/h	3-6tons/h	4-7tons/h	5-8tons/h
机器重量 Machine Weight	5.2tons	12tons/18tons	18tons	23tons	27tons
机器外观尺寸 Machine Overall Dimension	6100*1400*2000mm	7450*1600*2300mm 9400*1600*3500mm	9800*1600*3200mm	9850*1600*3200mm	9950*1600*3200mm
送料装置 Feeding Device	Cyclone/iron conveyor	iron conveyor	iron conveyor	iron conveyor	iron conveyor

高级配置

Advanced configuration

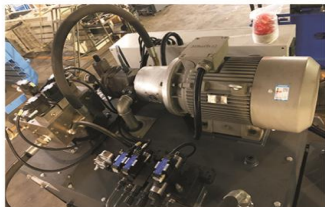
			
德国西门子电机 Germany Siemens motor	美国SUN节流阀 USA SUN throttle valve	德国西门子触摸屏 Germany Siemens touch screen	德国HARDOX 耐磨板 Germany HARDOX wear plate
			
台湾7OCEAN液压阀 Taiwan 7OCEAN hydraulic valve	美国Marathon电机 USA Marathon motor	韩国 Autonics温度传感器、显示器 South Korea Autonics temperature sensors, displays	德国Wiebrock电接点压力表 Germany Wiebrock electric contact pressure gauge
			
美国PARKER油泵 USA PARKER oil pump	美国Continental高压管 USA Continental high-pressure tube	美国Continental 高压油管II USA Continental high-pressure tube II	冷却系统：选用风冷却器或者水冷却器 Cooling system choose air cooler or water cooler

加工流程

Processing flow chart



优势介绍 Advantage introduction



1.采用台湾7OCEAN快速差动系统。快速前进、快速回程。效率提升30%以上。

Adopt Taiwan 7OCEAN fast differential system. Fast forward and fast return. The efficiency is increased by more than 30%.



2.采用韩国Autonics温度传感器、温度显示器，根据客户需求调节温度，智能化控制冷却系统的启动和停止。

Adopt Korea Autonics temperature sensor and temperature display to adjust the temperature according to the adjust the temperature according to customer needs, intelligently control the start and stop of the cooling system.



3.采用西门子高分辨率触摸屏设计，可以自行设置编程进行控制。电器箱上带有故障警告指示灯，如出现故障系统自动报警，触摸屏上显示故障信息。

With Siemens high-resolution touch screen design, you can set your own programming to control. There is a fault warning indicator on the electrical box. If there is a fault, the system automatically alarms and the fault message is displayed on the touch screen.

4.采用法国施耐德、德国西门子等电器元件，电器箱配置外置式总开关，复核欧盟CE认证标准，更安全可靠。

Adopting Schneider of France, the electrical box is equipped with an external main switch, and the EU CE certification standard is reviewed, which is safer and more reliable. The cylinder is imported from Taiwan and the cylinder is disassembled.



优势介绍 Advantage introduction



1.油缸密封圈使用的是英国Hallite；油缸采用台湾7OCEAN进口品牌。油缸采用拆卸式，维修更方便，使用更稳定。

The cylinder seal is made of British Hallite; the cylinder is imported from Taiwan 7OCEAN. The cylinder is detachable, which makes maintenance easier and more stable.

2.气缸后部装有缓冲装置，以防止气缸尾部的冲击，提高气缸的使用寿命。加厚的开放式法兰具有更长的使用寿命，并且不会漏油。

The rear of the cylinder is equipped with a buffer device to prevent the impact of the tail of the cylinder and increase the service life of the cylinder. The thickened open-type flange has a longer service life and refuses to leak oil.



4.小车，有8个轮子，我们在轮子的外圈覆盖耐磨圈，使用寿命更长。

The car has 8 wheels. We cover the wear ring on the outer ring of the wheel and have a longer service life.



6.小车上使用高耐磨材质的刮板——(聚四氟乙烯)。作用：防止灰尘、垃圾进入轮子，增加轮子的使用寿命。

A highly wear-resistant scraper—(polyfluorotetraethylene) is used on the trolley. Function: prevent dust and garbage from entering the wheel and increase the service life of the wheel.



7.出包口的三块门板，是收口式结构。门板使用H钢做的，强度更高，更耐用。常规的厂家使用的是铁板焊接件，变形量大，平整度差，强度低，有应力集中。

The three door panels of the outlet are the closing structure. The door panel is made of H steel, which is stronger and more durable. Conventional manufacturers use iron plate welded parts with large deformation, poor flatness, low strength and stress concentration.

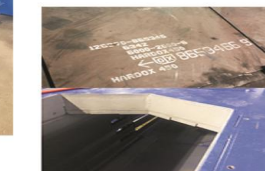


8.出包口有计数轮，带有感应器装置。作用：检测包块长度和数量，显示在触摸屏上。

The exit port has a counting wheel with a sensor device. Function: Detect the length and quantity of the block and display it on the touch screen.



3.易于调节气缸附近的位置开关。Easy to adjust the position switch near the cylinder.



5.刀片使用H13装置，使用寿命更长。齿牙形状，剪切更轻松。

The blade uses the H13 unit for long life. Tooth shape, cutting the plate that is easier to rub with the wheel. We use the imported HARDOX board.

Y82X系列废纸/纸板/软塑料打包机 Paper/Carton/Soft Plastic Film Balers
Y82YLG系列铝罐/PET瓶子打包机 Cans/PET Bottle Balers



机器应用

专门用于废旧瓦楞纸箱，纸板，报纸，软塑料等物料的回收压缩打包。

Usage

Specially designed for recycling waste cardboards, cartons, newspaper, soft plastic film etc. With wide feed opening door.

机器特点

- 自动挂链出包，提高了工作效率。
- 安全门垂直升降，操作方便，安全门不关闭，机器不启动，非常安全。
- 采用开门停机设计，使机器更安全可靠。
- 装配急停按钮，单独安装，位置醒目，使操作更安全。
- 采用欧美标准的防弹门结构，能保护操作者的安全。
- 装配自动平衡装置，避免因放置物料不当产生意外。
- 采用日本进口NOK密封圈，使用寿命更长。
- 采用日本A.M.C油管接头，确保不漏油。
- 采用台湾进口叠加式阀组，安装体积小，维修方便。
- 独特的电机和泵的直叉连接，保证泵和电机100%同心，替代了一般的联轴器联结方式，提高了泵的使用寿命。

Features

- Automatic chain bale ejector for quickly and easily ejecting the bales out from the machine.
- Wide feed opening door lifts upwards automatically when the platen goes up.
- The ram will stop running downwards when the feeding gate is opened which ensure the safety of the operation.
- Equipped with independent emergency stop for safe operation.
- Equipped with Euro and U.S standard anti-rebound gate structure which makes sure the safety of operation.
- Special ram guides design makes the platen not slope because of uneven materials feedings during compression.
- Equipped with NOK seals that from Japan means longer lifespan of the seals.
- Equipped with A.M.C.oil pipe joints that from Japan ensures the machine far away from oil leakage problems.
- Equipped with superimposed valves that from Taiwan, less space required for the installation.
- Peculiar combination of motor and pump with direct-crossed connection makes sure 100 percent concentricity, which replacing the common coupling connection so that extend the lifespan of the pump.

参数 Specifications

Y82X系列废纸/纸板/软塑料打包机 Paper/Cartron/Soft Plastic Film Balers				
型号 Model	Y82X-30	Y82X-40	Y82X-50	Y82X-60
压力 Pressure	30tons	40tons	50tons	60tons
加料口尺寸(L*W) Feed Opening Size (L*W)	1100*500mm	1200*500mm	1500*500mm	1800*550mm
压缩腔高度 Baling Chamber Height	1400mm	1500mm	1500mm	1600mm
包块尺寸(L*W*H, L可调) Bale Size(L*W*H, L can be adjustable)	1100*700*(500-900)mm	1200*800*(600-1000)mm	1500*760*(600-1000)mm	1800*1000*(350-1050)mm
包块重量 Bale Weight	150-250kgs	200-450kgs	300-500kgs	250-700kgs
功率 Power	5.5kw	7.5kw	7.5kw	11kw
机器重量 Machine Weight	1900kgs	2300kgs	2800kgs	3500kgs
机器外观尺寸 Machine Overall Dimension	1500*1050*2900mm	1650*1200*3100mm	2000*1150*3100mm	2260*1350*3520mm

Y82YLG系列铝罐/PET瓶子打包机 Cans/PET Bottle Balers				
型号 Model	Y82YLG-30	Y82YLG-40	Y82YLG-50	Y82YLG-80
压力 Pressure	30tons	40tons	50tons	80tons
加料口尺寸(L*W) Feed Opening Size (L*W)	800*500mm	1000*500mm	1100*500mm	1200*500mm
压缩腔高度 Baling Chamber Height	1500mm	1500mm	1500mm	1700mm
包块尺寸(L*W*H, L可调) Bale size(L*W*H, L can be adjustable)	800*600*(200-1000)mm	1000*600(300-1000)mm	1100*700*(300-1000)mm	1200*800*(300-1200)mm
包块重量 Bale Weight	30-120kgs	60-180kgs	90-270kgs	200-380kgs
功率 Power	5.5kw	7.5kw	7.5kw	15kw
机器重量 Machine Weight	1400kgs	1700kgs	1900kgs	2500kgs
机器外观尺寸 Machine Overall Dimension	1280*850*3300mm	1480*1000*3400mm	1600*1100*3500mm	1700*1200*3900mm

Y82X系列废纸/纸板/软塑料打包机 Paper/Cartron/Soft Plastic Film Balers

Y82YLG系列铝罐/PET瓶子打包机 Cans/PET Bottle Balers



Y82D系列纺织品/服装/羊毛/棉花打包机 Textile/Clothes/Wool /Cotton Balers

机器应用

专门用于二手衣服，被子，鞋子，羊毛，棉花等产品的回收打包，被大量使用在旧衣服，服装，羊毛，棉花回收工厂。



Usage

Widely applied by second-hand clothes, wool, cotton recycling plants for compressing second-hand clothing, comforters, shoes, wool, cotton etc.



机器特点

- 液压提箱，提高工作效率，方便套包和#字捆包。
- 采用开门停机设计，使机器更安全可靠。
- 装配急停按钮，单独安装，位置醒目，使操作更安全。
- 装配自动平衡装置，避免因放置物料不当产生意外。
- 采用日本进口NOK密封圈，使用寿命更长。
- 采用日本A.M.C油管接头，确保不漏油。
- 独特的电机和泵的直叉连接，保证泵和电机100%同心，替代了一般的联轴器联结方式，提高了泵的使用寿命。

Features

- Hydraulic lifting chamber door improves the work efficiency, conveniently for packaging and the '#tying.
- The ram will stop running downwards when the feeding gate is opened which ensure the safety of the operation.
- Equipped with independent emergency stop for safe operation.
- Special ram guides design makes the platen not slope because of uneven materials feedings during compression.
- Equipped with NOK seals that from Japan means longer lifespan of the seals.
- Equipped with A.M.C oil pipe joints that from Japan ensures the machine far away from oil leakage problems.
- Peculiar combination of motor and pump with direct-crossed connection makes sure 100 percent concentricity, which replacing the common coupling connection so that extend the lifespan of the pump.

参数

Specifications

型号 Model	Y82D-30-6343 Y82D-30-7340	Y82D-50	Y82D-120	Y82D-150
压力 Pressure	30tons	50tons	120tons	150tons
加料口尺寸(L*W) Feed Opening Size (L*W)	600*400mm 700*400mm	750*350mm	750*450mm	1100*600mm
压缩腔高度 Baling Chamber Height	1250mm/1200mm	1850mm	1700mm	1850mm
包块尺寸(L*W*H, L可调) Bale size(L*W*H, L can be adjustable)	630*430*(400-600)mm 730*400*(250-600)mm	800*600(400-550)mm	800*450*(350-500)mm	1150*850*(500-900)mm
包块重量 Bale Weight	40-60kgs	80-120kgs	90-150kgs	300-400kgs
功率 Power	7.5kw	11kw	18.5kw	18.5kw
机器重量 Machine Weight	1800kgs	2800kgs	3800kgs	6000kgs
机器外观尺寸 Machine Overall Dimension	1250*800*3700mm 1200*700*3500mm	1550*1000*4200mm	1600*1000*4550mm	2000*1450*4300mm

Y82JC系列交叉油缸纸板打包机 Cardboard Balers with Cross Cylinder

Y82S系列小型立式打包机 Small Vertical Balers

机器应用

专门用于纸板，废纸，废塑料等类似产品的压缩打包。



Usage

Specialized in compressing
cardboards, paper, plastic scraps
etc.



机器特点

- 自动挂链出包，提高了工作效率。
- 选配接液槽设计，适用于压缩打包有水分物料，确保水不流到地面上。
- 采用开门停机设计，使机器更安全可靠。
- 装配急停按钮，单独安装，位置醒目，使操作更安全。
- 采用欧美标准的防弹门结构，能保护操作者的安全。
- 装配自动平衡装置，避免因放置物料不当产生意外。
- 采用日本进口NOK密封圈，使用寿命更长。
- 采用日本A.M.C.油管接头，确保不漏油。
- 独特的电机和泵的直叉连接，保证泵和电机100%同心，替代了一般的联轴器联结方式，提高了泵的使用寿命。

Features

- Automatic chain bale ejector for quickly and easily ejecting the bales from the machine.
- Bottom liquid receiver is optional for collecting the liquid from the compressing materials.
- The ram will stop running downwards when the feeding gate is opened which ensures the safety of the operation.
- Equipped with independent emergency stop for safe operation.
- Equipped with Euro and U.S standard anti-rebound gate structure which makes sure the safety of operation.
- Special ram guides design makes the platen not slope because of uneven materials feedings during compression.
- Equipped with NOK seals that imported from Japan means longer lifespan of the seals.
- Equipped with A.M.C.oil pipe joints that imported from Japan ensures the machine far away from oil leakage problems.
- Peculiar combination of motor and pump with direct-crossed connection makes sure 100 percent concentricity, which replacing the common coupling connection so that extend the lifespan of the pump.

参数 Specifications

机器类型 Machine Type	Y82JC系列交叉油缸纸板打包机 Cardboard Balers with Cross Cylinder	
型号 Model	Y82JC-30	Y82JC-50
压力 Pressure	30tons	50tons
加料口尺寸(L*W) Feed Opening Size (L*W)	1050*550mm	1050*550mm
压缩腔高度 Baling Chamber Height	1600mm	1600mm
包块尺寸(L*W*H, L可调) Bale Size (L*W*H, L can be adjustable)	1200*800*(500-1000)mm	1200*800*(500-1100)mm
包块重量 Bale Weight	200-400kgs	300-500kgs
功率 Power	4kw	4/5.5kw
机器重量 Machine Weight	2200kgs	2800kgs
机器外观尺寸 Machine Overall Dimension	1800*1400*2300mm	1900*1500*2250mm

机器类型 Machine Type	小型立式打包机 Small Vertical Balers			双腔打包机 Twin Chamber Balers
型号 Model	Y82S-30D	Y82S-10A	Y82S-20A	Y82S-30D
压力 Pressure	30tons	10tons	20tons	30tons
加料口尺寸(L*W) Feed Opening Size (L*W)	700*500mm	600*400mm	700*400mm	700*500mm
压缩腔高度 Baling Chamber Height	728mm	100mm	1200mm	728mm
包块尺寸(L*W*H, L可调) Bale size (L*W*H, L can be adjustable)	700*500*(150-400)mm	600*400(200-600)mm	800*600*(400-800)mm	700*500*(150-400)mm
包块重量 Bale Weight	30-60kgs	20-50kgs	60-120kgs	30-60kgs
功率 Power	0.75kw	2.2kw	3kw	0.75kw
机器重量 Machine Weight	500kgs	800kgs	1000kgs	500kgs
机器外观尺寸 Machine Overall Dimension	1600*560*1750mm	900*570*2240mm	1180*800*2550mm	1600*560*1750mm

Y82JC系列交叉油缸纸板打包机 Cardboard Balers with Cross Cylinder Y82S系列小型立式打包机 Small Vertical Balers



Y82CF系列厨房垃圾打包机 Kitchen Garbage Balers



机器应用

广泛应用于各类船舶、舰艇、海上石油平台、海港，以及厨房、酒店、医院等行业的废弃压缩。

Usage

Specially used for compressing the waste like food residue, paper, plastics, disposable tableware etc. which widely applied by the vessels, drilling platform, island, harbor, restaurant, hotel and hospital etc.

机器特点

- 结实强壮，适合船舶等特殊环境。
- 不锈钢内盒确保物料不会腐蚀机器。
- 整机全封闭设计，能有效防止灰尘。
- 采用开门停机设计，使机器更安全可靠。
- 装配急停按钮，单独安装，位置醒目，使操作更安全。
- 装配自动平衡装置，避免因放置物料不当产生意外。
- 采用日本进口NOK密封圈，使用寿命更长。
- 采用日本A.M.C.油管接头，确保不漏油。

Features

- Machine's frame is strong and powerful for odious environment.
- Equipped with stainless inner box to avoid corrosion.
- The machine with professional enclosed design to avoid dust in.
- The ram will stop running downwards when the feeding gate is opened which ensure the safety of the operation.
- Equipped with independent emergency stop for safe operation.
- Special ram guides design makes the platen not slope because of uneven materials feedings during compression.
- Equipped with NOK seals that from Japan means longer lifespan of the seals.
- Equipped with A.M.C. oil pipe joints that from Japan ensures the machine far away from oil leakage problems.

参数

Specifications

型号 Model	Y82CF-50	Y82CF-1A	Y82CF-3A
压力 Pressure	50tons	1tons	3tons
加料口尺寸(L*W) Feed Opening Size (L*W)	540*300mm	385*240mm	φ 500
压缩腔高度 Baling Chamber Height	810mm	300mm	800mm
内盒尺寸 Inner Box Size	536*426*500mm	405*290*350mm	φ 500*800
功率 Power	1.5kw	0.75kw	1.5kw
机器重量 Machine Weight	500kgs	165kgs	250kgs
机器外观尺寸 Machine Overall Dimension	700*500*1958mm	1400*500*450mm	1005*785*2040mm

Y82TD系列套袋机 Baling and Bagging Machines



机器应用

专门用于刨花，苜蓿草等生物垫料，以及布料，废旧棉纱，纤维等边角料的压缩套袋，广泛用于实验室，宠物垫料加工，二手服装回收厂等。

Usage

Specially used for bedding material such as shavings, clovers, and other biological materials, as well as cloth, waste cotton yarn, fiber and other scraps of compressed bagging, widely used in laboratory, pet mat material processing, Used clothing recycling factory and so on.



机器特点

- 自带称重设备，确保每个包块重量一致（只针对手动投料套袋机）。
- 一键式操作，方便快捷。
- 一次加料完成，提高工作效率。
- 日本欧姆龙PLC控制，安全连锁，质量更可靠。

Features

- Equipped with weighing device,ensures uniform bale weight(only for Manual feeding bagging machine).
- Only one press button required for the whole pressing and ejecting system,for conveniently operation.
- One time material feeding ,improves the working efficiency.
- Equipped with Omron brand of PLC,make sure safety interlock.

参数 Specifications

机器类型 Machine Type	手动投料套袋机 Manual Feeding Baling and Bagging Machine				自动套袋机 Automatic Baling and Bagging Machine
型号 Model	Y82TD-100	Y82TD-200	Y82TD-250	Y82TD-300	Y82TD-400
加料口尺寸(L*W) Feed Opening Size (L*W)	500*300mm	850*550mm	1000*550mm	1200*600mm	100*650mm
包块尺寸(L*W*H可调) Bale size(L, can be adjustable)	300*900*200mm	550*380*200mm	550*400*250mm	600*450*250mm	650*300*400mm
包块重量 Bale Weight	1kgs(sawdust)	20kgs(fabric)	25kgs(fabric)	30kgs(fabric)	40-50kgs
功率 Power	5.5kw	7.5kw	7.5kw	11kw	11kw
机器重量 Machine Weight	850kgs	1000kgs	1100kgs	1200kgs	3000kgs
机器外观尺寸 Machine Overall Dimension	1600*1300*1500mm	2600*2200*1500mm	3000*2300*1500mm	3500*2500*1500mm	3300*3600*2000mm

Y82LT系列废旧轮胎打包机 Y82LT Series scrap tyre baling machine

机器应用

打包处理范围：汽车轮胎、卡车轮胎、自行车轮胎、摩托车轮胎、公交车轮胎、飞机轮胎等各种尺寸和规格的废旧轮胎。

Usage

Baler processing range: car tires, truck tires, bicycle tires, motorcycle tires, and buses tires, and other various size and the specifications of the scrap tire.



机器特点

奥普废旧轮胎打包机是一款专用型立式液压打包机，主要用于压缩打包轮胎以及其他高弹性的材料。该机具有稳定性强，操作简便，安全节能，外形美观等特点。经过压缩后的轮胎包块，主要用于炼油、磨粉、再生胶，还可用于建造隔音墙、城市绿化设施建设、轻质路基填料及其他土木工程的材料，同时也大大的节约了贮存空间，降低了运输成本，及时解决轮胎污染问题，创造绿色地球。

Features

AUPU scrap tire baler machine is a special vertical hydraulic baler, mainly used for compressed tires and other high elastic material. The machine has a strong stability, easy operation, safety energy saving, beautiful shape, etc. The compressed time bales are mainly used in oil refining, grinding, reclaimed rubber, it can also be used to build sound barriers, city green infrastructure are subgrade filling and civil engineering materials,meanwhice greatly saves storage space, reduced costs of transportation, timely solve the tire pollution problems, create green earth.

参数

Specifications

型号 Type	用途 Application	包型尺寸(mm) Package size(mm)	包重(Kg) Package weight(Kg)	配用功率(KW) Matched capacity(KW)	生产效率(T/hour) Production efficiency	操作方式 Operating mode
Y82-100LT	轮胎打包 tyre baler	1550 × 760 × 1000	≥ 1000	11	3-3.5	手动操作 Manual operation
Y82-100LTK	轮胎打包 tyre baler	1550 × 760 × 1300	≥ 1200	18.5	3.5-4	
Y82-150LT	轮胎打包 tyre baler	1800 × 1000 × 1000	≥ 1300	18.5	4-4.5	
Y82-100LTZ	轮胎打包 tyre baler	1550 × 760 × 1000	≥ 1000	11	4-4.5	半自动,按钮操作 Semi-automatic, button operation
Y82-100LTKZ	轮胎打包 tyre baler	1550 × 760 × 1300	≥ 1200	18.5	4.5-5	
Y82-150LTZ	轮胎打包 tyre baler	1800 × 1000 × 1000	≥ 1300	18.5	5-6	



Y82YF系列衣服打包机(出口型) Y82YF Series Clothes Baling Machine

机器特点

我们公司研制的液压衣服打包机，主要销售到英国、美国等发达国家，采用旋转式箱门，使加料更加轻松，生产效率高一倍，并采用了提升式开门，操作更简单，更安全，包块尺寸和重量均按照国外客户要求设计，具有很高的通用性。

Features

The hydraulic clothes baling machine manufactured by our company, mainly exported to Britain, the United States and other developed countries, adopt the rotary door, to make the feeding more easily and double the initial production. At the same time, the lift type is applied to open the door, much simpler operation, much safer. The bale size and weight are both designed in accordance with foreign customers' demands, has great generality.



参数

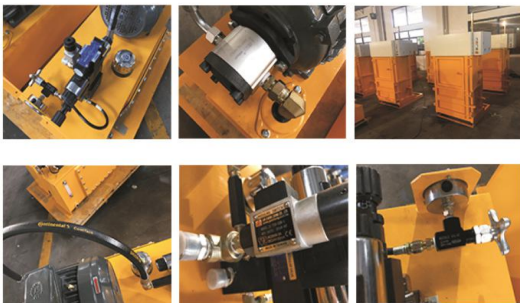
Specifications

型号 Type	用途 Applicaation	包型尺寸(mm) Package size(mm)	包重(Kg) Package weight(Kg)	配用功率(KW) Matched capacity(KW)	公称压力(KN) Nominal pressure(KN)
Y82-25YF	衣服打包 clothes baler	740 × 340 × L	45-50	11	250
Y82-25YFS	衣服打包 clothes baler	740 × 340 × L (双料箱 Double chamber)	45-50	11	250
Y82-63YF	衣服打包 clothes baler	1100 × 650 × L	75-150	15	630
Y82-63YFS	衣服打包 clothes baler	740 × 340 × L (双料箱 Double chamber)	75-150	15	630

加工流程图 Processing flow chart



高级配置 Advanced configuration



零部件品质保障：我们选择优质的配件供应商，比如7Ocean、德国WIZON阀、美国马牌高压软管、台湾进口压力继电器、GRH油泵等知名品牌，并且建立长期的合作关系，保证机器的稳定运行，增加机器的使用寿命，故障率低，解决后顾之忧。

Spare parts quality guarantee: we choose high quality accessories suppliers, such as 7 ocean, WIZON valve, Germany, the United States, continental high pressure hose, Taiwan imported pressure relay, GRH oil pump, such as a well-known brand, and establish a long-term relations of cooperation, to ensure the stable operation of the machine, to increase the service life of the machine, low fault rate and solve the trouble back at home.

优势介绍 Advantage introduction



1. 防弹倒钩，防止松散物料回弹。
Bullet-proof barb prevents loose material from bouncing back.



2. 采用欧美标准的防弹门结构，自动升降，安全门不关闭，机器不启动。

Adopt the European and American standard bulletproof door structure, automatic lifting, the safety door does not close, the machine does not start.



3. 自动系统：采用开门停机设计，门打开时，机器自动停止运行，更安全可靠。

控制系统：装配急停按钮，并且安装在单独安装在明显的位置，出现故障立即一键关闭，保障操作者的安全。

Automatic system: adopt open door stop design, when the door open, the machine automatically stop running, more safe and reliable.

Control system: equipped with emergency stop button, and installed in a separate installation in the obvious position, a key to shut down immediately, to ensure the safety of the operator.



4. 选用优质材质：固定滑块选用高分子化合物聚四氟乙烯材质，耐低温（-192℃-260℃）、耐腐蚀，高绝缘、高润滑、不沾附，更结实耐磨。

High quality material: the fixed slider is made of polymer polytetrafluoroethylene, resistant to high and low temperature (-192℃ - 260℃), corrosion resistant, high insulation, high lubrication, no adhesion, more solid and wear resistant.



5. 油箱清洁：我们对液压系统的油箱清洁采用酸洗法，利用酸溶液去除钢铁表面的氧化皮和锈蚀物，液体清洁更彻底，避免残渣堵塞过滤器，保证油体清洁无杂质，同时提高不锈钢的抗腐蚀能力，液压系统稳定运行，延长使用寿命。

Tank cleaning: our tank cleaning the pickling method is adopted for the hydraulic system, the use of acid solution to remove scale and rust on the surface of the steel material, liquid clean more thoroughly, avoid debris blocking filter, guarantee the oil body clean without impurities, improve the corrosion resistance of stainless steel at the same time, the hydraulic system and stable operation, prolong service life.