

该机主要用于将各种板材加工、剪切成各种规格的材料，特别对利用板材的加工更为适用，可完全替代火焰切割，减低加工成本。

This machine is mainly used in all sorts of plate material processing, cut into various specifications of the materials, special material processing more appropriate for use, can completely replace flame cutting, reduce the processing costs. Especially for the use of plate processing it's more appropriate.



◆ 技术参数 Technology parameters

型号 Type	最大剪切 Max. materia pressure(t)	刀口长度 Knife edge length(mm)	最大张口 max opening mouth(mm)	每分钟可剪切次数 Shearing time per min	最大剪切钢板厚度 Maximum shear plate thickness	机器总功率 Total power of machine(kw)
Q15-120	1200	600	130 (可根据客户要求定做)	6-8次/Times	20 x 600	185
		1200			20 x 1200	
Q15-160	1600	600/800			25 x 600	22
		1200			25 x 1200	
Q15-200	2000	600/800			28 x 500	22
		1200			28 x 1200	
Q15-250	2500	600/800			30 x 500	30
		1600			30 x 1600	
Q15-315	3150	800			35 x 800	37
Q15-500	5000	800			40 x 800	44



HBS系列废钢打包剪切机用于各种轻薄料、生产及生活用废钢、轻金属结构件、各种塑性有色金属（不锈钢、铝合金、铜材等）的压缩打包和剪切；或者对上述废料直接压缩打包。

HBS series heavy type shear baling machine is used for pressing and shearing various light materials, production and life use scrap steel, light metal structural parts, all kinds of plastic non-ferrous metal (stainless steel, aluminum alloy, copper and so on), or press the above mentioned materials directly.



◆ 技术参数 Technology parameters

型号 Type	最大剪切力(吨) Max shear pressure	喂料张口(mm) Feeding opening	包块截面(mm) Bale size	刀口长度(mm) Knife edge length	产量(吨/小时) Production	剪切频率(次/分) Shear rate	主电机(kw) Motor
HBS-400	400	3000 x 1200 x 700	400 x 400	750	2.5-4.0	3-4	75
HBS-500	500	4800 x 2240	650 x 550	750	5.5-15		(2+1) x 90
HBS-630	600	6000 x 2500	720 x 650	880	8.0-22.0		(3+1) x 90

用于各类生产和生活用废钢各种有色金属(不锈钢、铜等)直接切成所需大小。加料室尺寸大, 适合广泛的材料采用PLC全自动控制。高效率, 随时可以调整剪切长度。

For all kinds of production and life use scrap non-ferrous metal (stainless steel, copper, etc.) directly cut into the required size. Room size, suitable for a wide range of materials. PLC automatic control. High efficiency, shear length can be adjusted at any time

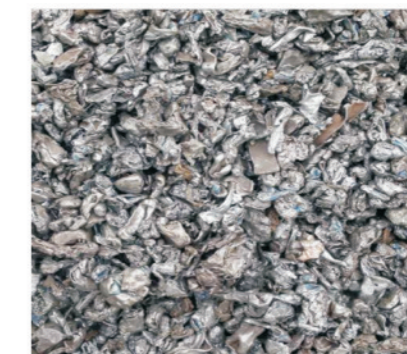


◆ 技术参数 >>> Technology parameters

型号 Type	最大剪切力(吨) Max shear pressure	料箱尺寸(mm) Feeding size	开口高度(mm) Opening Highly	刀口长度(mm) Knife edge length	产量(吨/小时) Production	剪切频率(次/分) Shear rate	主电机(kw) Motor
Q91Y-315	3150	3000×1200×800	400	1200	4-8	3-4	90
Q91Y-400	4000	5000×1600×800	400	1600	7-10		90
Q91Y-500	5000	6000×1600×800	500	1600	10-15		135
Q91Y-630	6300	8000×1800×900	500	1800	13-18		225
Q91Y-800	8000	8000×1800×1000	600	1800	15-20		270
Q91Y-1000	10000	8000×2000×1200	700	2000	18-25		360

PSX系列废钢破碎线, 用于加工报废汽车车体、马口铁类、旧家电、自行车、空罐等下等废料成为上级的制钢原料。通过本机不断粉碎, 涂膜, 提高体积比重, 投电炉时防止爆炸, 在一定状态下提升溶解率等, 满足钢厂“精料入炉”的要求。

PSX series scrap steel smashing assembly line, is for processing scrap car bodies, tinplate class, old electrical appliances, bicycles, cans and other waste materials inferior to make it as superior steel materials. Constantly crushed by the machine, go coating to improve the proportion of volume to prevent explosion cast furnace, at a certain state to improve the dissolution rate, etc, to meet the mills' fine material into the furnace "requirement".



◆ 技术参数 >>> Technology parameters

型号 Type	料口宽度 (mm) Width of feed opening	主机功率 (HP) Main power	生产能力 (T/H) Productivity
PSX-90	1000	900(120)	2-3
PSX-160	1200	160(212)	4-6
PSX-400	1400	400(535)	6-10
PSX-500	1600	500(670)	12-18
PSX-700	2200	700(1000)	15-20
PSX-900		900(1200)	20-25
PSX-1200		1200(1600)	25-30
PSX-1500	2500	1500(2000)	30-50
PSX-2250		2250(3000)	50-70

